

01-045 / 01-051 GENESIS 250/300 REAR SEAT KIT INSTALLATION INSTRUCTIONS

YAMAHA® DRIVE®



ITEMS INCLUDED

- Hardware packs 1-7
- Grab Bar
- Bagwell Bracket
- Lean Back Brackets
- Armrests
- Footrest
- Main Frame
- Bagwell Hold Downs

TOOLS NEEDED

- Drill
- 17mm Socket
- 17mm Wrench
- 14mm Socket
- 10mm Socket
- #3 Phillips Bit
- 13mm Wrench
- 3/8" Drill Bit

WARNING: WE RECOMMEND PROFESSIONAL INSTALLATION. IF YOU CHOOSE TO NOT HAVE THIS PRODUCT INSTALLED BY A PROFESSIONAL, WE HIGHLY RECOMMEND THAT YOU EXERCISE CAUTION, CARE, AND PATIENCE WHEN INSTALLING THIS PRODUCT.



Main Brackets



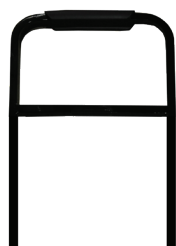
Footrest



Main Frame



Bagwell
Hold Downs



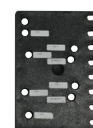
Grab Bar



Bagwell
Brackets



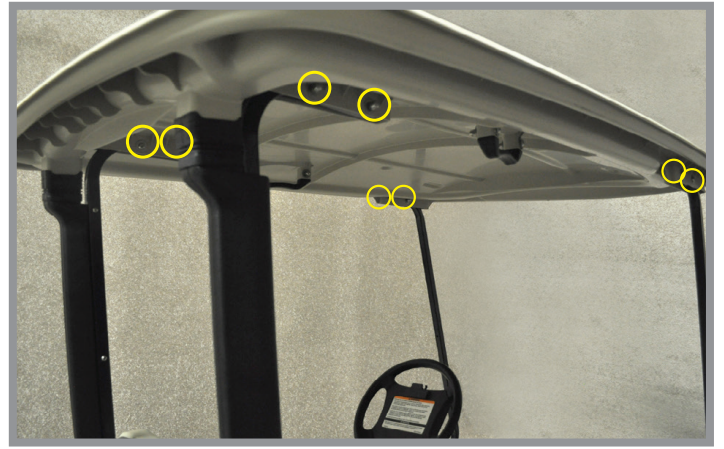
Armrests



Lean Back Brackets
(Sold with 250/300 cushions)
Only needed for premium seats

STEP 1

Remove factory canopy, rear struts, seat back, and motor cover. Retain hardware.



STEP 2

Remove hardware from gutters. Remove gutters by sliding them upward. Retain hardware and gutters.



STEP 3

Remove rear struts from both sides.



STEP 4

Remove seat back. Retain hardware.



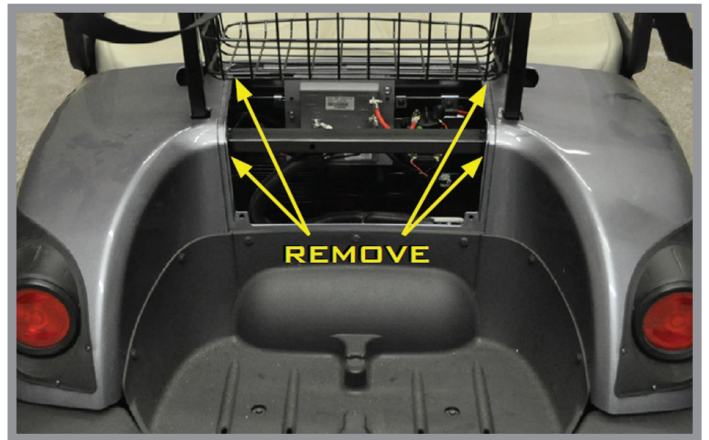
STEP 5

Remove motor cover panel by popping out plastic rivets. Retain hardware.



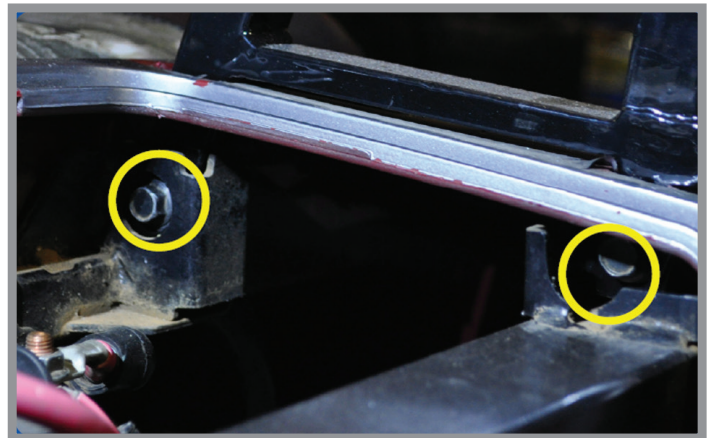
STEP 6

Take off factory seat back bracket by removing hardware located inside motor compartment. Retain hardware.



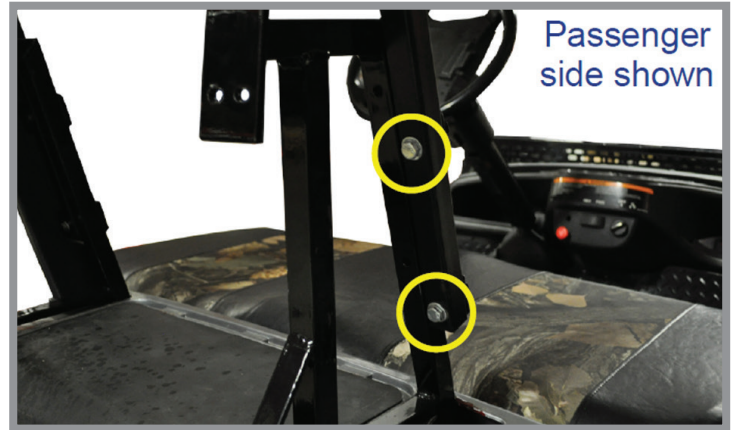
STEP 7

Place seat back brackets into body frame as shown, using retained hardware from Step 6. Repeat process on the other side, but **DO NOT** tighten bolts until after Step 10.



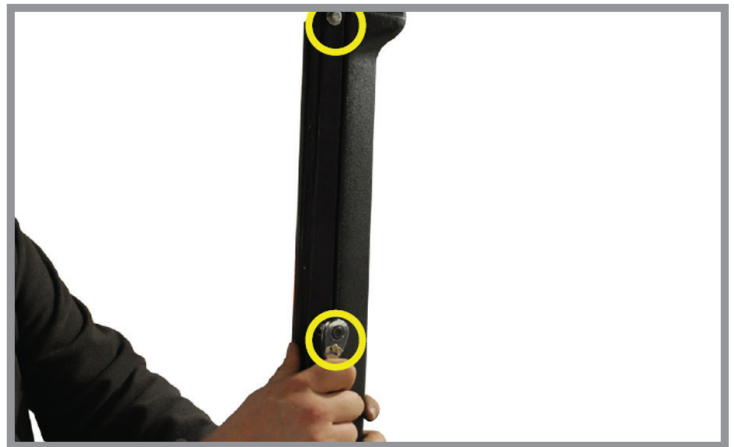
STEP 8

Attach factory struts to main bracket's using retained hardware from Step 3, and reinstall the canopy using the hardware from Step 1.



STEP 9

Attach factory strut to plastic gutter using hardware retained from Step 2.



STEP 10

Using hardware retained from Step 4, attach seat back cushion to seat bracket as shown.

Tighten all the hardware installed to this point after the back cushion bolts have been installed.

Note: Tightening hardware before back cushion is installed could result in cushion mounting holes to not align.



STEP 11

Attach bagwell hold downs to bagwell bracket as shown using 8x25mm countersunk hardware in Pack 1. Cover nuts with caps supplied in pack.



STEP 12

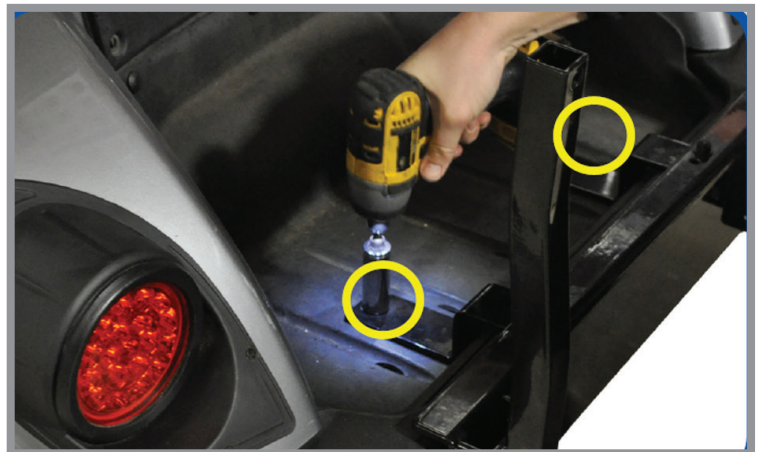
Remove factory bolts from bagwell. Enlarge hole by drilling using a 3/8" drill bit.

IMPORTANT: Be sure to drill all the way through the frame.



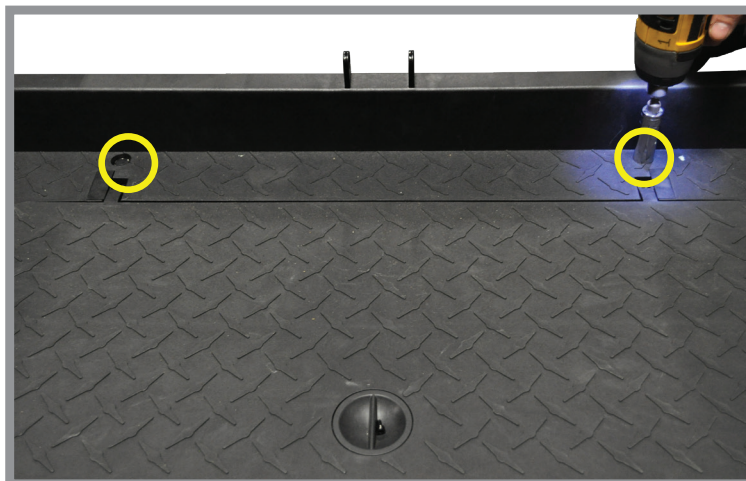
STEP 13

Attach bagwell bracket to cart using 10mm x 90mm hardware from Pack 1 and tighten. Reinstall the motor cover using plastic rivets from Step 5.



STEP 14

Attach main polyboard frame using 8 x 70mm hardware from pack 2.



STEP 15

Attach main polyboard frame to bagwell brackets using 10 x 50mm hardware from Pack 2. DO NOT TIGHTEN.



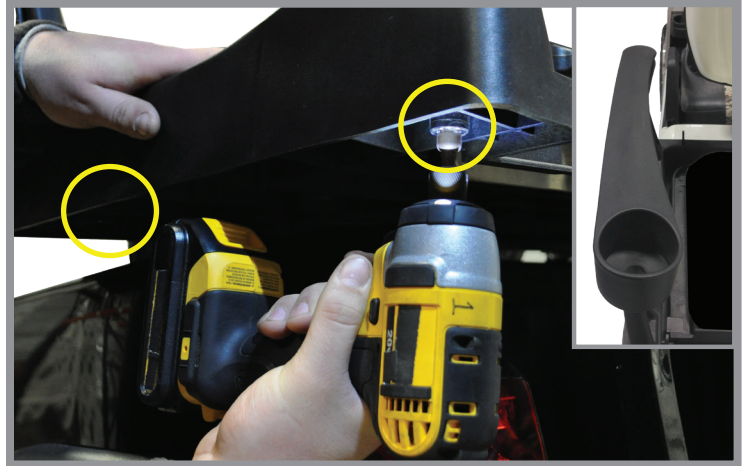
STEP 16

- A. Using 3/8" drill bit, gently drill through back bumper as shown.
- B. Using a #3 Phillips bit, attach bagwell bracket to cart using 10x100mm countersunk hardware from Pack 2.



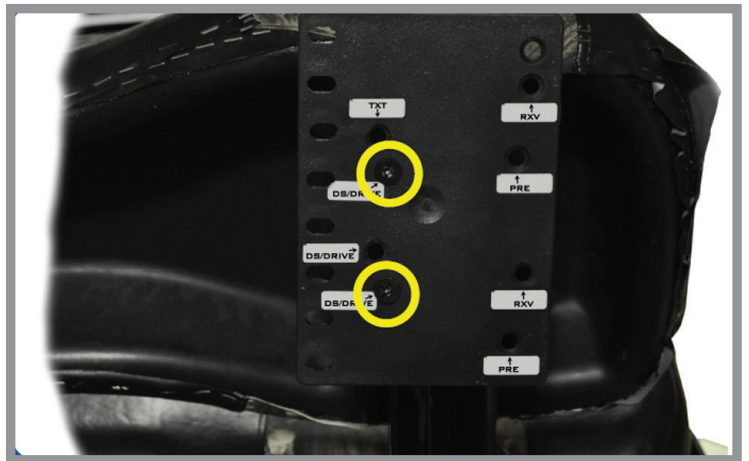
STEP 17

Attach bagwell bracket to cart using 10mm x 90mm hardware from Pack 1 and tighten.



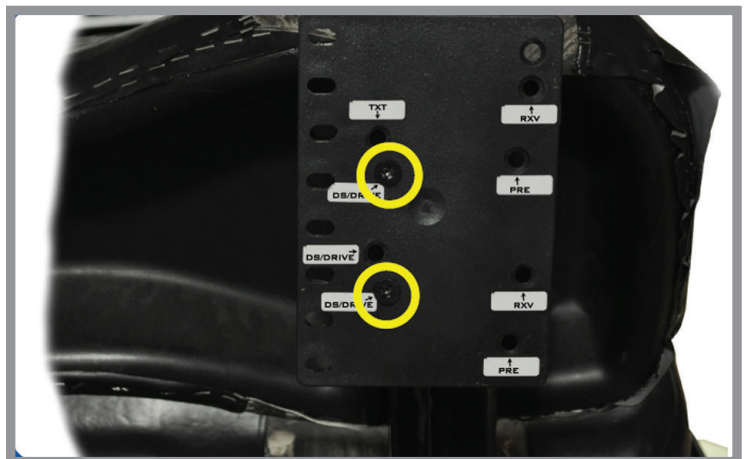
STEP 18

If using 250/300 seat cushion attach lean back bracket that was packaged with the cushions. Attach main polyboard frame using 8 x 70mm hardware from Pack 2.



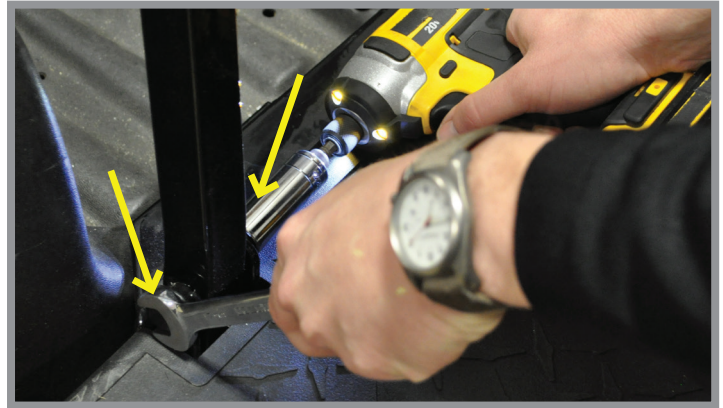
STEP 19

Choose desired height and attach lean back cushion to bracket using hardware from Pack 5.



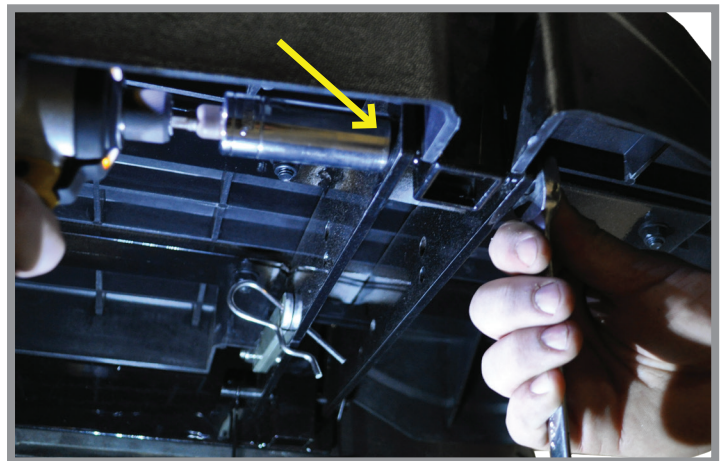
STEP 20

Attach footrest bracket as shown using hardware from Pack 6.



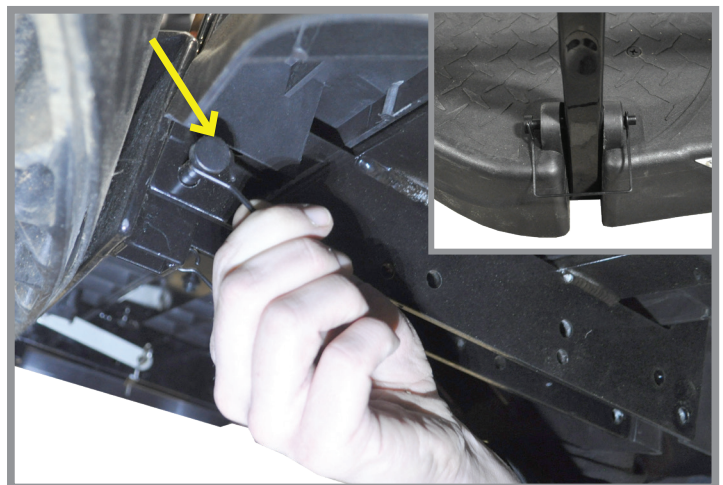
STEP 21

Attach grab bar to footrest using hardware from Pack 6.



STEP 22

Using quick release pins from hardware Pack 6 secure footrest to bagwell bracket.



STEP 23

Attach seat bottom cushion as shown using hardware from Pack 7. Verify all the hardware is tight throughout the rear seat kit and top.



STEP 24

Footplate can be folded up by removing the four c-clips and folding forward. To lock footplate in up right poistion use brackets as shown.



INSTALLATION COMPLETE

Yamaha, G-14™, G-19™, G-22™, G29™, Drive, and Drive² are registered trademarks of Yamaha Golf-Car Company and Yamaha Motor Corporation ("Yamaha"). Reference to Yamaha's trademarks and products is only for the purposes of identifying golf carts with which is this Madjax product is compatible. Madjax products are aftermarket parts and are not original equipment parts. Madjax is not connected or affiliated or sponsored by Yamaha Motor Corporation or Yamaha Golf-Car Company.

HARDWARE

PACK 1

- 4 - 8x25mm Countersunk #3 Phillips
- 4 - 8x18mm Flat Washer
- 4 - 8mm Lock Nut
- 2 - 10x90mm Hex Bolt
- 4 - 10x20mm Flat Washer
- 2 - 10mm Lock Nut
- 4 - 6mm Nut Caps
- 4 - Rubber Washers

PACK 2

- 2 - 8x70mm Hex Bolt
- 4 - 8x15mm Flat Washer
- 2 - 8mm Lock Nut
- 4 - 10x50mm Hex Bolts
- 4 - 10x20mm Flat Washer
- 2 - 10mm Lock Nuts
- 10 - Rubber Washers
- 2 - 10x100mm Countersunk #3 Phillips
- 2 - 10x20mm Flat Washer
- 2 - 10mm Lock Nuts

PACK 3

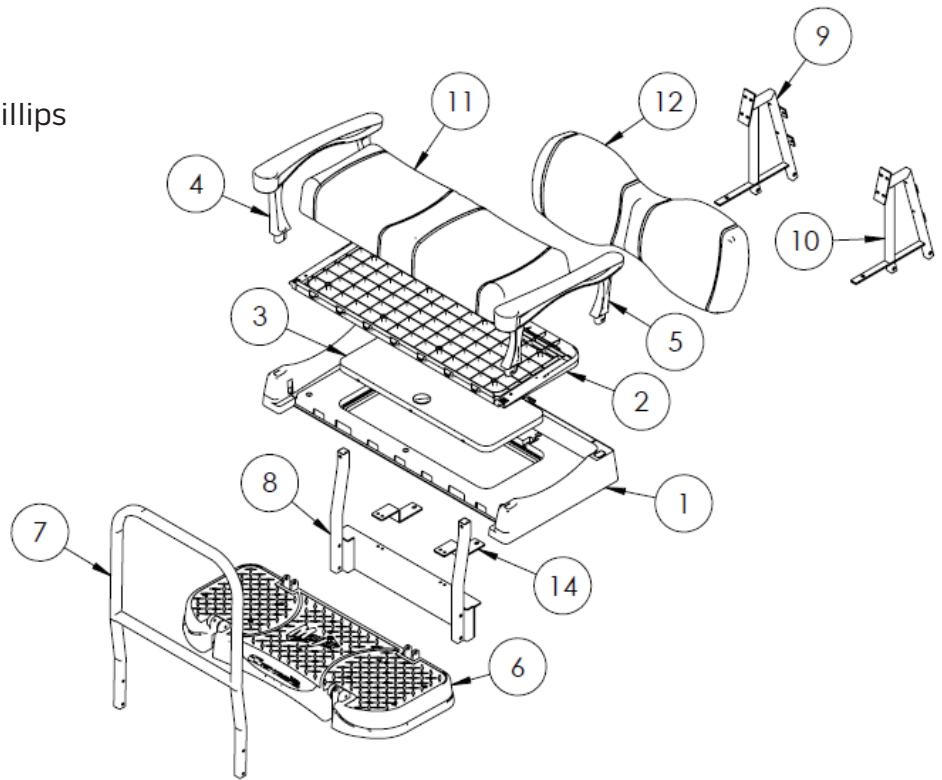
- 4 - 8x35mm Hex Bolts
- 4 - 8x15mm Flat Washers

PACK 4

- 4 - 8x30mm Countersunk #3 Phillips
- 4 - 8x15mm Flat Washers
- 4 - 8mm Lock Nuts

PACK 5

- 4 - 6x25mm Hex Bolt
- 4 - 6x15mm Flat Washer
- 4 - 6mm Lock Washer



PACK 6

- 4 - 10x75mm Hex Bolt
- 8 - 10x20mm Flat Washer
- 4 - 10mm Lock Nut
- 4 - Quick Release Pins
- 8 - Rubber Washers

PACK 7

- 8 - 8x40mm Countersunk