

26-156

EXTENDED TOP BRACKETS

FOR GENESIS 150 SEAT KIT

will fit Club Car® Precedent®

INSTALLATION INSTRUCTIONS

INCLUDED:

Front Brackets
Rear Brackets
Genesis 150 struts

TOOLS NEEDED:

17mm Socket
17mm Wrench
13mm Socket
10mm Socket
10mm Wrench



Rear Brackets

Front Brackets

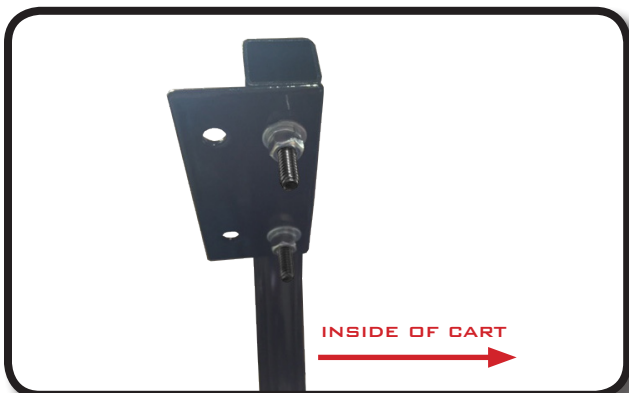
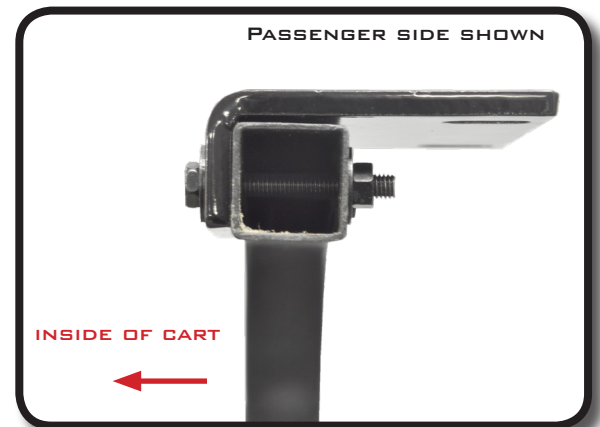


Genesis 150 Struts

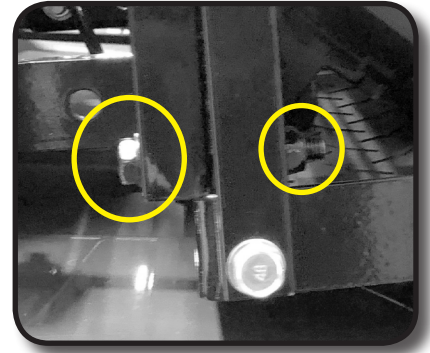
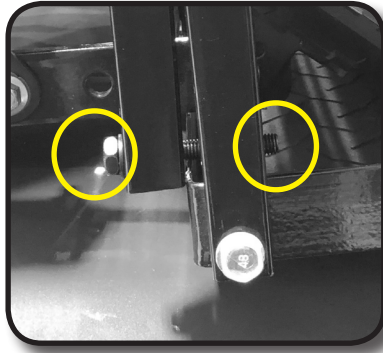
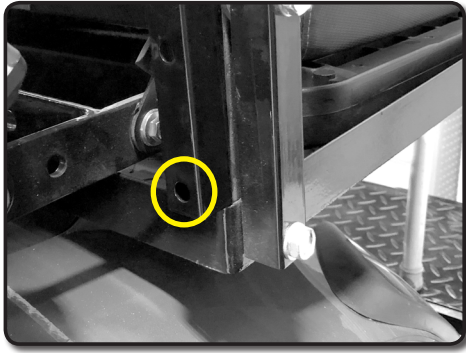
We recommend professional installation. If you choose to not have this product installed by a professional, we highly recommend that you exercise caution, care, and patience when installing this product as it involves drilling holes into your cart's body.

To begin remove factory canopy. Do not retain front or rear factory hardware as they will be replaced.

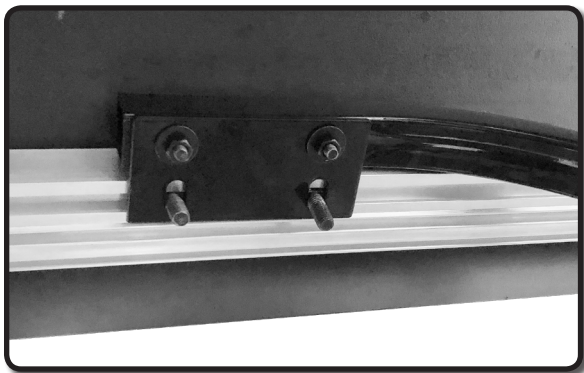
Using four 6mm x 40mm Hex head bolts, anti-slip nuts and washers attach front brackets to **INSIDE** of front struts as shown. Notice the slotted hole on the short side of the bracket, this needs to be mounted towards rear of cart.



Attach rear brackets to G150 struts using 6mm x 40mm bolts, anti-slip nuts, washers as shown. Be sure to mount bracket using the smaller diameter holes. Strut will mount from the inside of the track.

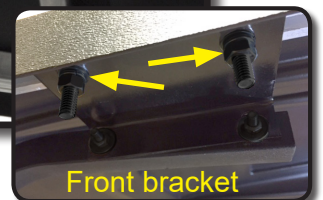


Using 10mm x 70mm bolts, anti-slip nuts, and washers attach struts to seat back support bar as shown.



Now insert two 8mm x 25mm carriage bolts, washers, lock washers, nuts into each side extrusion at each corner of top. These bolts will secure top extrusion to strut brackets.

Connect the Front strut brackets to the top extrusion using 8mm carriage bolts, washers, lock washers, and nuts. Hand tighten hardware first.



When installed correctly, the strut will have a slight curve inward as shown. Once all bolts are in place then tighten.

NOTE: If installing a windshield make sure to install windshield before tightening top hardware.



Installation Complete

Dacromet Hardware Pack

8 - Carriage Bolt	M8 x 25
8 - Hex head Bolt	M6 x 40
4 - Hex head Bolt	M10 x 70
16 - Flat Washer	Ø6 x Ø18 x 1.5
8 - Flat Washer	Ø8 x Ø18 x 2
8 - Flat Washer	Ø10 x Ø20 x 2
8 - Spring Washer	Ø8
8 - Nut	M8
8 - Anti-Slip Nut	M6
4 - Anti-Slip Nut	M10

Club Car®, Club Car® Precedent®, and Club Car® DS® are registered trademarks of Ingersoll Rand, Inc. ("Ingersoll Rand"). Reference to Club Car®, Club Car® Precedent®, or Club Car® DS® or any of Ingersoll Rand's trademarks, word marks, or products is only for purposes of identifying golf carts with which this product is compatible. These products are aftermarket parts and are not original equipment parts. We are not connected to, affiliated with, sponsored by, or endorsed by Ingersoll Rand or any of its subsidiary companies.