

26-158

EXTENDED TOP BRACKETS FOR MACH3 SEAT KIT

will fit Club Car® Precedent® / Yamaha Drive®

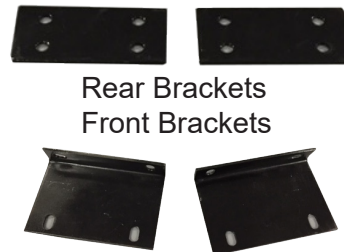
INSTALLATION INSTRUCTIONS

INCLUDED:

Front Brackets
Rear Brackets
Candy Cane struts
(sold seperately)

TOOLS NEEDED:

Cordless Drill
7/16" Drill Bit
17mm Socket
17mm Wrench
13mm Socket
10mm Socket
10mm Wrench
5/16" Drill bit
C-Clamps

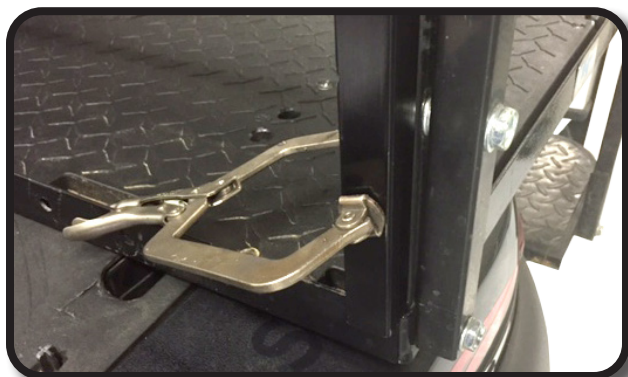
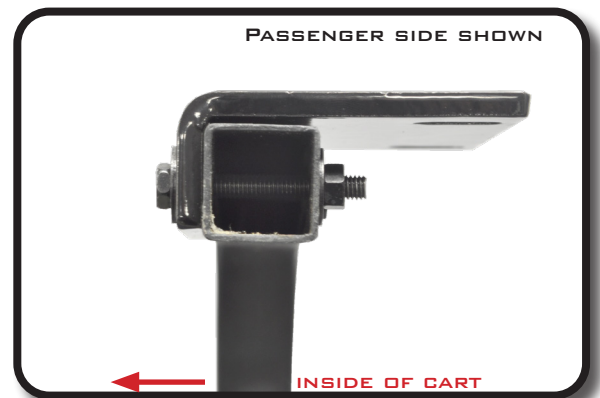


We recommends professional installation. If you choose to not have this product installed by a professional, we highly recommend that you exercise caution, care, and patience when installing this product as it involves drilling holes into your cart's body.

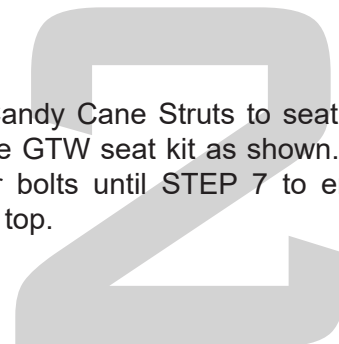
If installing Extended Top Brackets on a YAMAHA Drive skip to PAGE 3

To begin remove factory canopy. Do not retain front or rear factory hardware as they will be replaced.

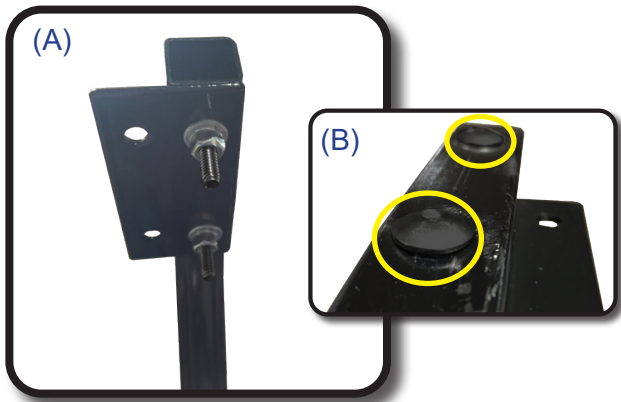
Using four 6mm x 40mm Hex head bolts with 6mm nylock nuts and attach front brackets to **INSIDE** of front struts as shown. Notice the slotted hole on the short side of the bracket, this needs to be mounted towards rear of cart.



Clamp Candy Cane Struts to seat back support bar of the GTW seat kit as shown. DO NOT drill holes for bolts until STEP 7 to ensure desired height of top.



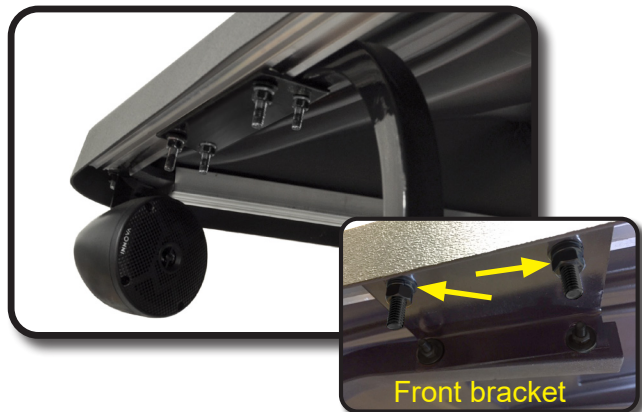
Using rear bracket as a template square end of strut and bracket. Using a marking pen, mark hole location. Drill marked hole with a 5/16" bit.



A) Attach rear brackets to candy cane struts using 6mm x 40mm carriage bolts as shown. Be sure to mount bracket using the smaller diameter holes.

B) Carriage bolt will secure to strut once hardware is tightened.

Now insert two 8mm x 25mm carriage bolts into side extrusion at each corner of top. These bolts will secure top extrusion to strut brackets.

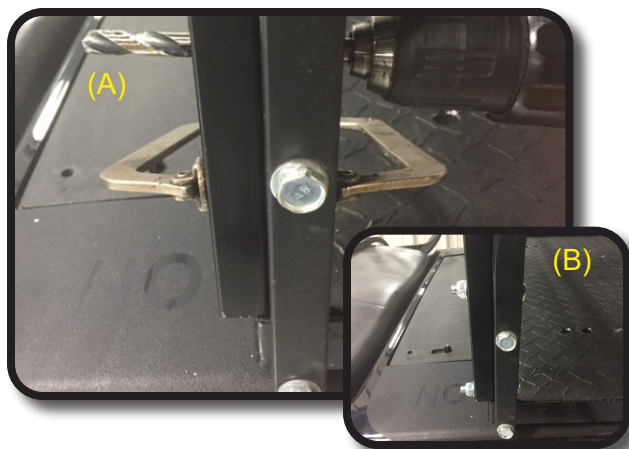


Connect the strut brackets to the top extrusion using 8mm carriage bolts, hand tighten hardware first. Once all bolts are in place then tighten.

NOTE: If installing a windshield make sure to install windshield before tightening top hardware.

(A) Now that top is in place find desired height of rear canopy. Using a 7/16" bit, drill through Candy Cane using holes in seat support bar as a guide.

(B) Using 10mm x 70mm bolts attach struts to seat back support bar as shown.



**CLUB CAR PRECEDENT
INSTALLATION COMPLETE**

26-158 Extended TOP BRACKETS FOR GTW SEAT KIT will fit YAMAHA® DRIVE® 1

1
Attach front brackets to front struts using 8mm x 40mm bolts and 8mm lock nuts at factory pre-drilled holes. Do not tighten hardware yet. Notice the slotted hole on the short side of the bracket, this needs to be mounted towards rear of cart.

Passenger side

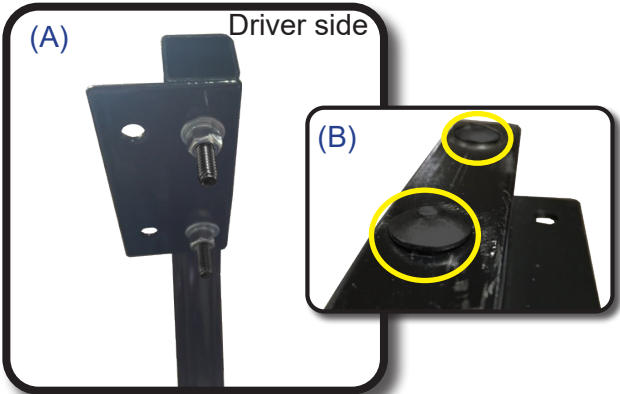


2
Clamp Candy Cane Struts to seat back support bar of the GTW seat kit as shown. DO NOT drill holes for bolts until STEP 7 to ensure desired height of top.

**Precedent model shown. Step is the same.*

3

Using rear bracket as a template, square end of strut and bracket. Using a marking pen, mark hole location. Drill marked hole with a 5/16" bit.



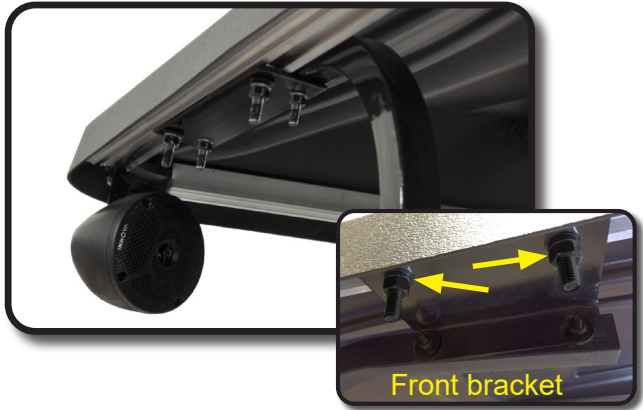
A) Attach rear brackets to candy cane struts using 6mm x 40mm carriage bolts as shown. Be sure to mount bracket using the smaller diameter holes.

B) Carriage bolt will secure to strut once hardware is tightened.

4

5

Now insert two 8mm x 25mm carriage bolts into side extrusion at each corner of top. These bolts will secure top extrusion to strut brackets.



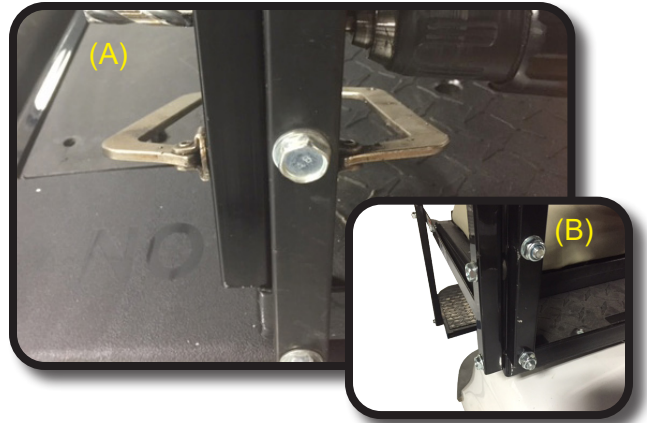
Connect the strut brackets to the top extrusion using 8mm carriage bolts, hand tighten hardware first. Once all bolts are in place then tighten.

Note: If installing windshield with this top. Make sure to install windshield before tightening top hardware.

6

(A) Now that top is in place find desired height of rear. Using a 7/16" bit, drill through Candy Cane using holes in seat support bar as a guide.

(B) Using 10mm x 70mm bolts attach struts to seat back support bar as shown.



**Precedent model shown. Step is the same.*



Installation Complete

Club Car®, Club Car® Precedent®, and Club Car® DS® are registered trademarks of Ingersoll Rand, Inc. ("Ingersoll Rand"). Reference to Club Car®, Club Car® Precedent®, or Club Car® DS® or any of Ingersoll Rand's trademarks, word marks, or products is only for purposes of identifying golf carts with which this product is compatible. These products are aftermarket parts and are not original equipment parts. We are not connected to, affiliated with, sponsored by, or endorsed by Ingersoll Rand or any of its subsidiary companies.

Dacromet Hardware Pack

8 - 6mm x 40mm Hex head bolts
16 - 6mm Flat washers
8 - 6mm Nylock nuts

8 - 8mm x 25mm carriage bolts
8 - 8mm Flat washers
8 - 8mm Lock washers
8 - 8mm Nuts

4 - 10mm x 70mm Hex head bolts
8 - 10mm Flat washers
4 - 10mm Nylock Nuts

