

26-201
EXTENDED TOP BRACKETS
for genesis 250
will fit *E-Z-GO® TXT® / T48
installation instructions

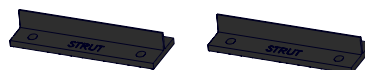


included:

Front Brackets
 Rear Brackets
 Struts
 Hardware Pack

tools needed:

Cordless Drill
 13mm Socket
 13mm Wrench
 10mm Socket
 5/16" Drill bit
 C-Clamps



Rear Brackets

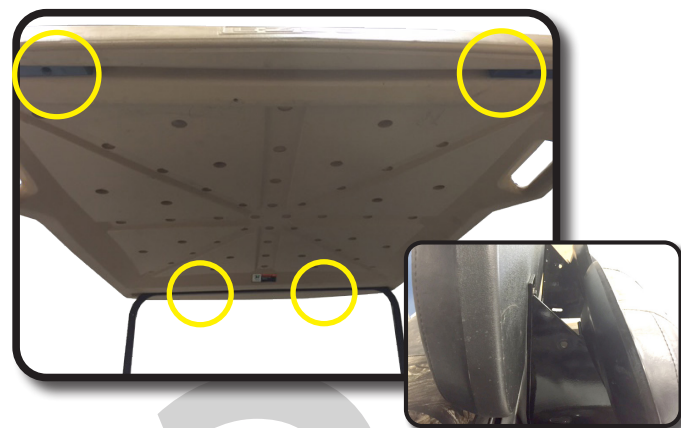
Front Brackets



Rear Struts

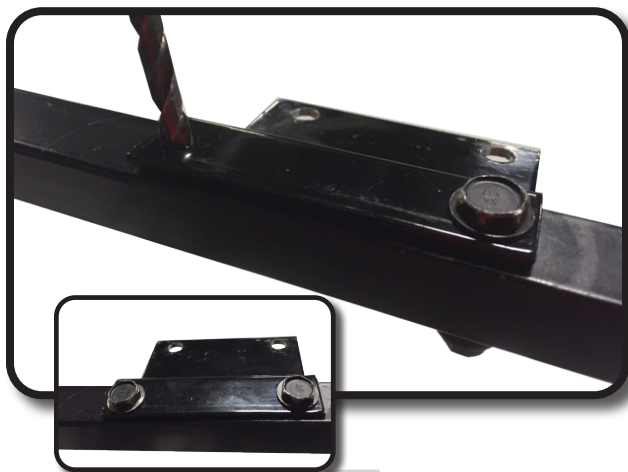
We recommend professional installation. If you choose to not have this product installed by a professional, we highly recommend that you exercise caution, care, and patience when installing this product as it involves drilling holes into your cart's body.

Remove factory canopy and rear struts. Retain hardware that is used to attach rear struts to G250/300 main bracket.



Attach front brackets to front struts using 8mm x 40mm hardware in factory mounting locations as shown. Tighten hardware.

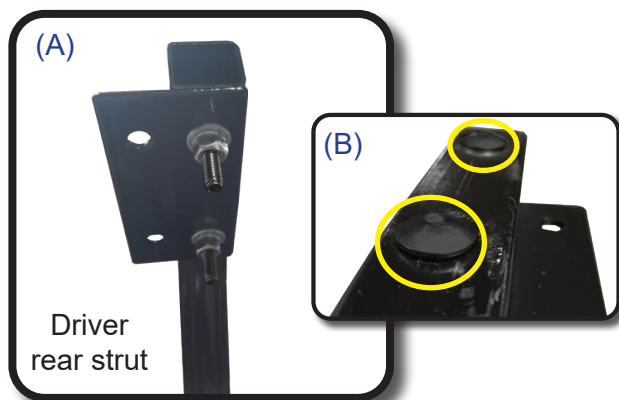




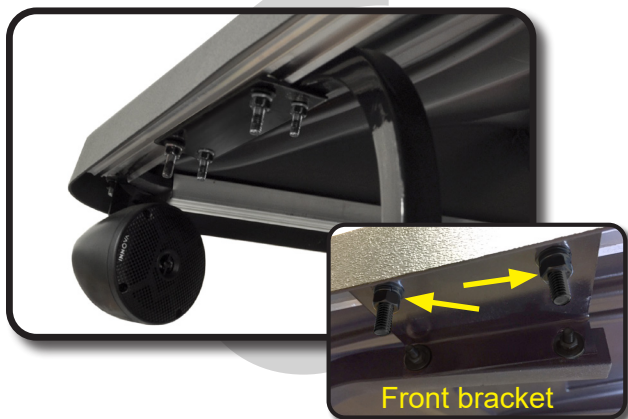
Using a 5/16" bit, drill through strut using front bracket as a guide as shown. Use 8mm x 40mm bolts and 8mm Nylock nuts and tighten.

A) Attach rear brackets to rear struts using 6mm x 40mm carriage bolts as shown. Be sure to mount the strut to the side of the bracket labeled "STRUT"

B) Carriage bolt will secure to strut once hardware is tightened.



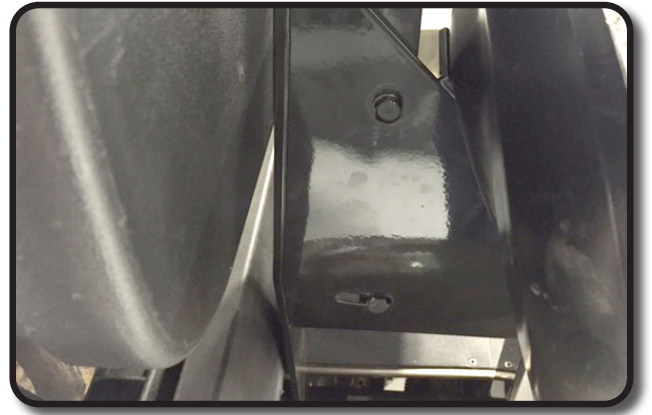
Now insert two 8mm x 25mm carriage bolts into side extrusion at each corner of top. These bolts will secure top extrusion to strut brackets.



Connect the strut brackets to the top extrusion using 8mm carriage bolts, hand tighten hardware first. Once all bolts are in place then tighten.

7

Now that your top is attached, the rear struts can be secured. Attach the struts to the seat back bracket with 8mm hardware included with your seat kit.



Installation Complete

Hardware Pack

(Dacromet Coated)

- 4 - 6mm x 40mm carriage bolts
- 4 - 8mm x 40mm Hex head bolts
- 8 - 8mm x 25mm carriage bolts
- 4 - 6mm lock washers
- 4 - 6mm flat washers
- 4 - 6mm nuts
- 8 - 8mm lock washers
- 16 - 8mm Flat washers
- 4 - 8mm Nylock nuts
- 8 - 8mm Nuts

